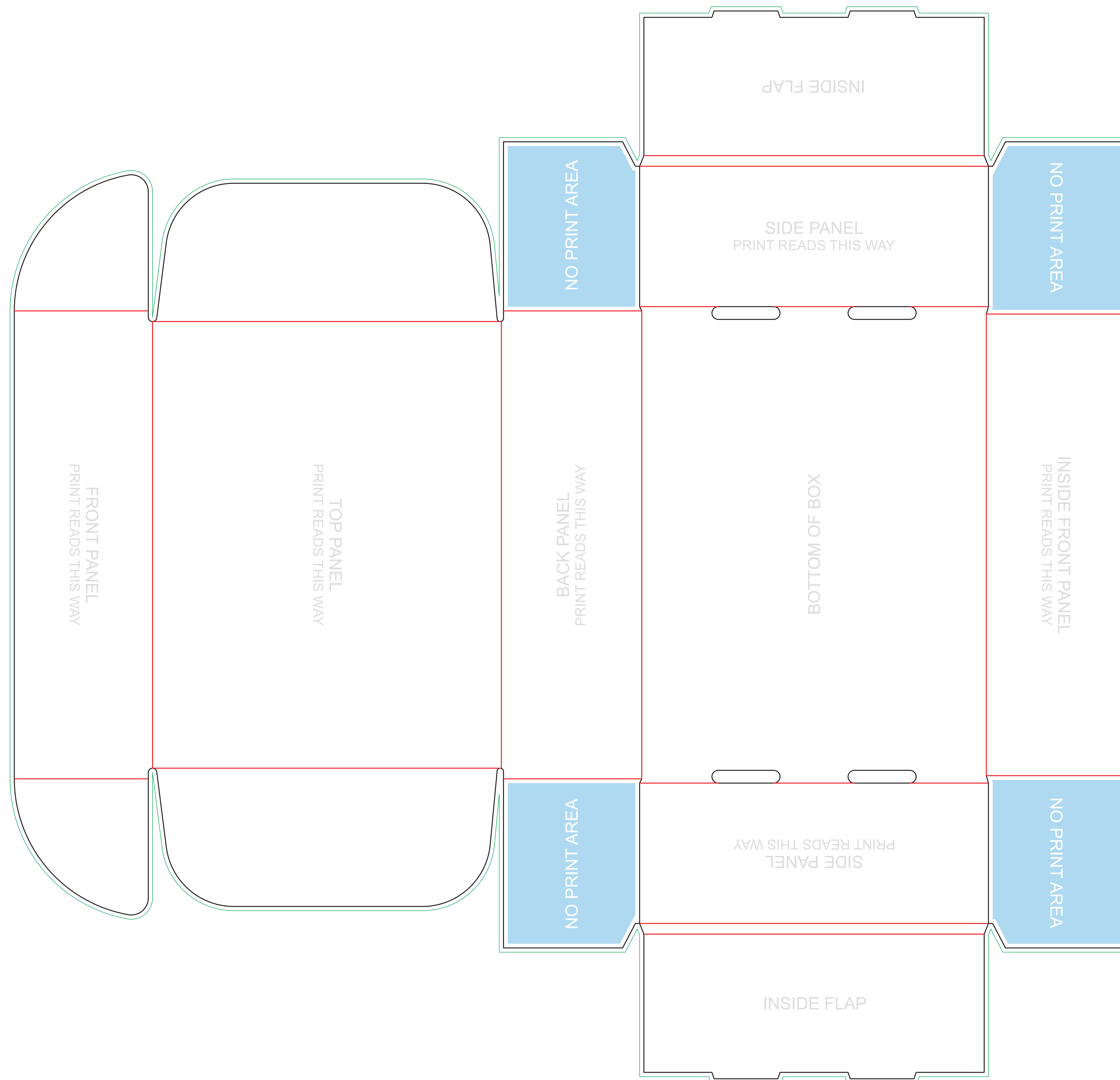


**MAILER BOX**  
13 X 10 x 4 B-FLUTE



**Instructions & Tips**

Convert all colors to CMYK.

Extend art (such as background color) to Bleed Lines.

Keep important art, such as text, 1/8" away from cut and fold lines.

Outline all fonts.

Save file as "High Quality Print" PDF.

DO NOT DELETE OR ALTER DIELINE LAYER (Don't worry, our dielines will not print).

**LEGEND**

- CUT LINE
- FOLD LINE
- BLEED LINE
- NO PRINT AREA