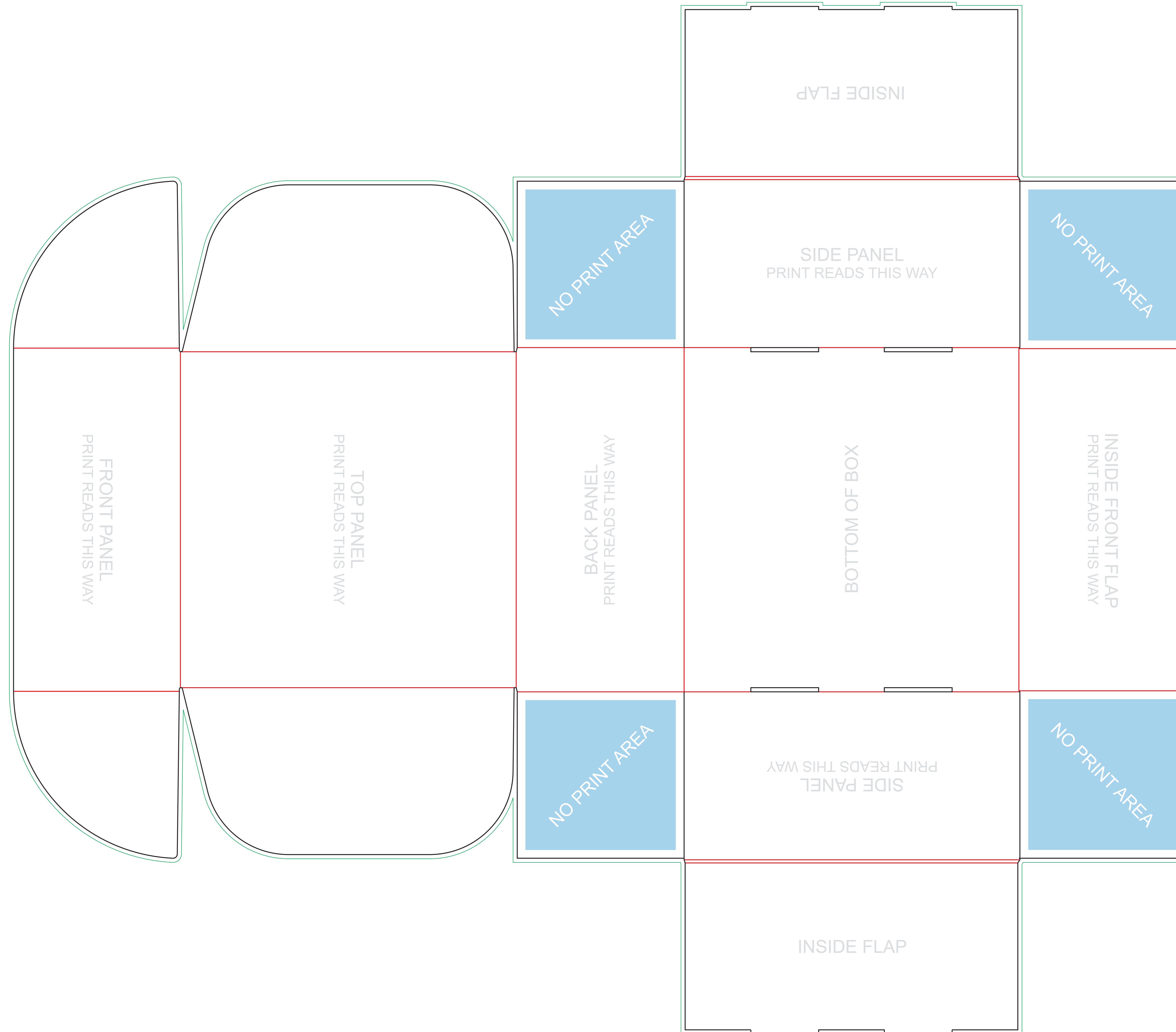


# MAILER BOX

10 x 10 x 5 .024 SBS



**LEGEND**

- CUT LINE
- FOLD LINE
- BLEED LINE
- NO PRINT AREA

## Instructions & Tips

- Convert all colors to CMYK.
- Extend art (such as background color) to Bleed Lines.
- Keep important art, such as text, 1/8" away from cut and fold lines.
- Outline all fonts.
- Save file as "High Quality Print" PDF.
- DO NOT DELETE OR ALTER DIELINE LAYER (Don't worry, our dielines will not print).